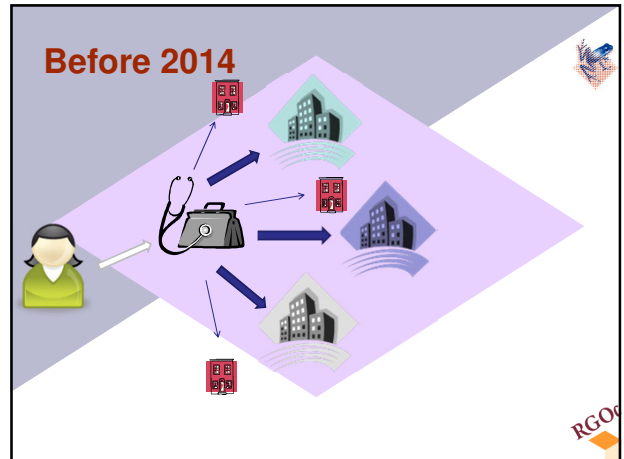


**Disclosure slide**

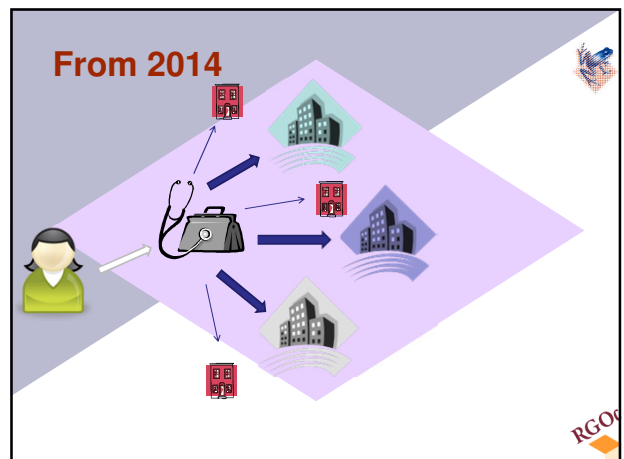
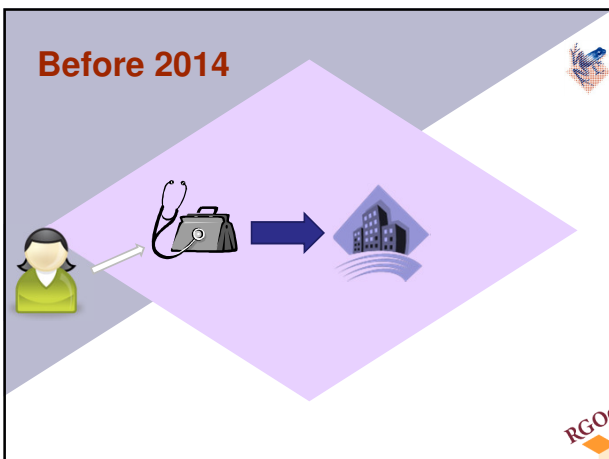
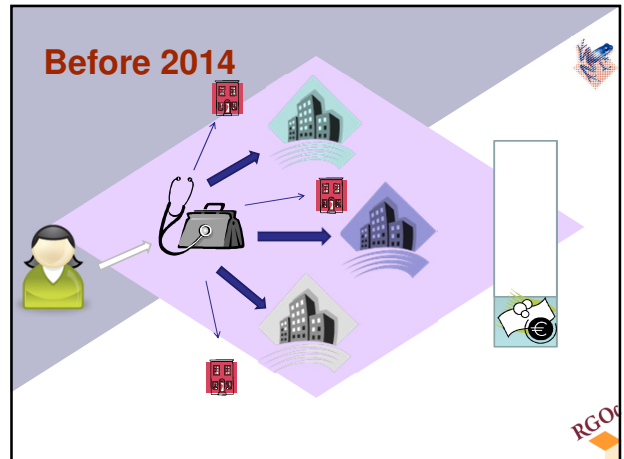
Conflict of interests	None
Relevant relationship with companies	None

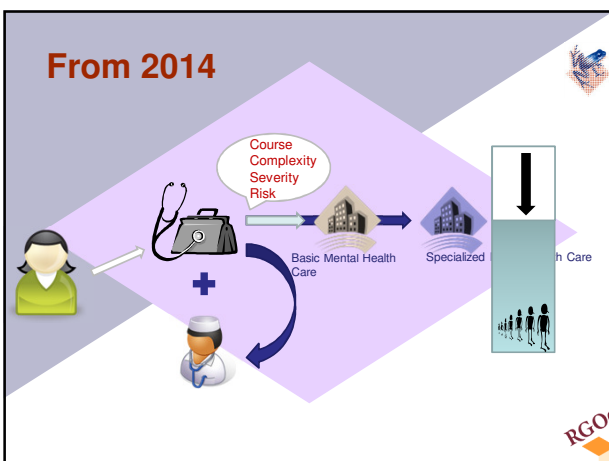
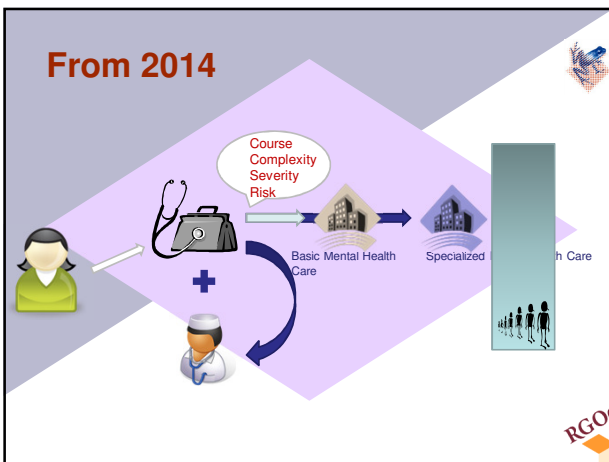
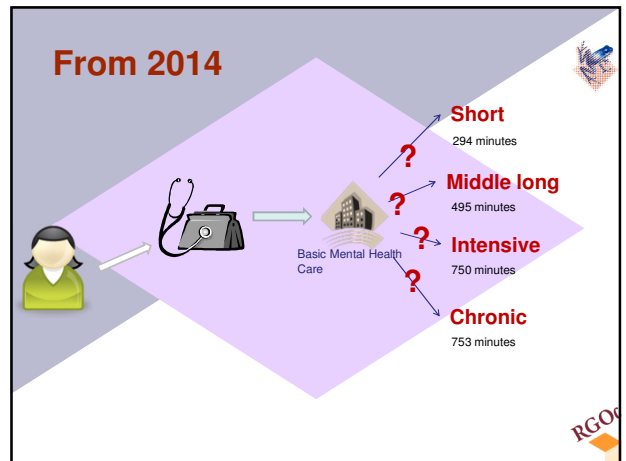
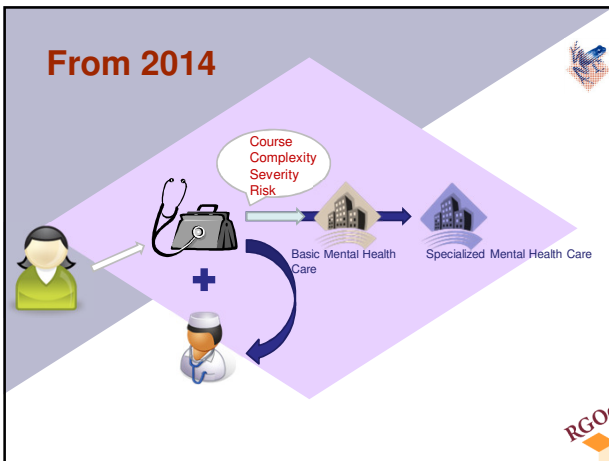


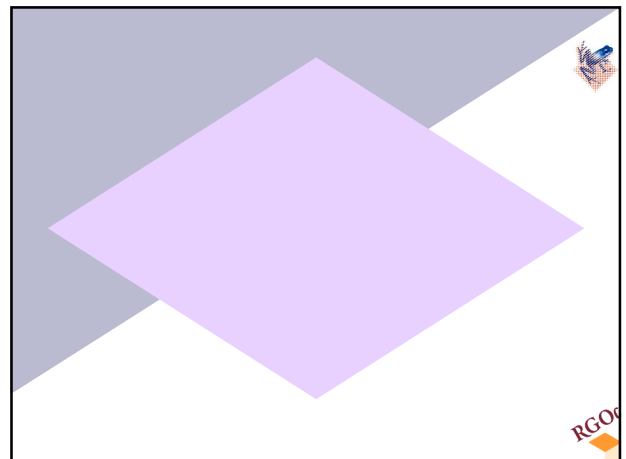
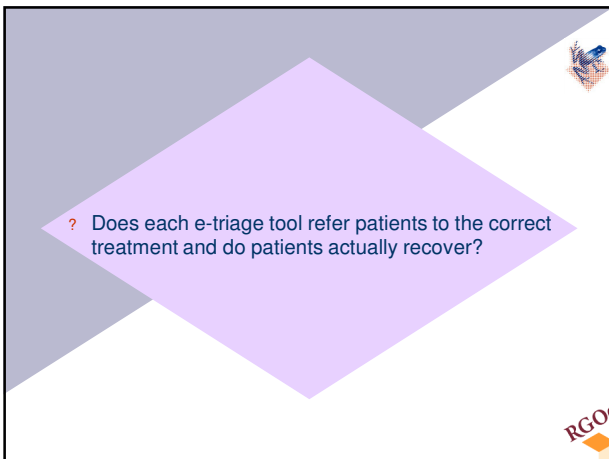
**Well begun is half done**

Development in (e)diagnostics/triage  
&  
the Northern Netherlands Network for Mood and Anxiety  
Disorders

Floor Verhoeven MSc. & dr. Eric Ruhé







## Staging & Profiling

**Staging** = the description of the stage of development a disease is in.

**Profiling** = the recognition of factors influencing course of disorder and reaction to treatment.

- ? Differences in treatment success for different stages of disease?
- ? Can differences in inflammation markers/cognitive reactivity/residual symptoms/recurrence contribute to treatment choice and success?

